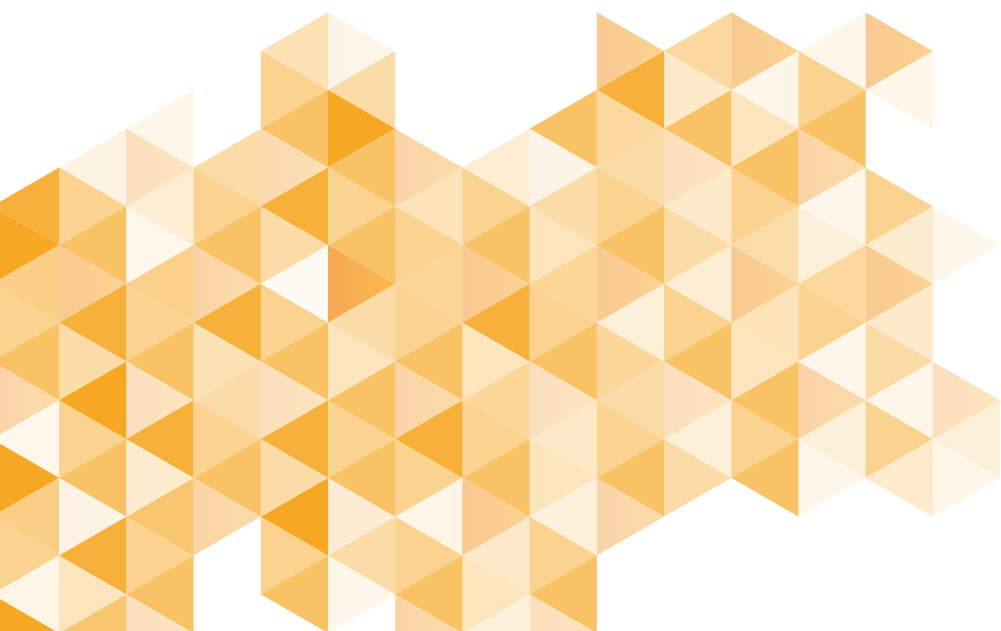




ELT 2026
EXCELLENCE
AWARDS



ELIGIBILITY RULES



State and private Nursery schools, Primary schools, Secondary schools, Foreign Language Centres as well as Foreign languages departments of colleges are eligible to apply.

- All activities cited in support of your entries must have been implemented within the past 12 months.
- The ELT Excellence Awards are judged by a panel of experts who will select the winners from 24 categories.
- The decision of the judges is final. The judges may place an entry in a more appropriate category if they think it is applicable and

reserve the right to reject any entry which does not comply with the requirements of the Awards.

- The organisers reserve the right to change deadlines and categories as appropriate.
- The organisers respect as confidential any data submitted unless otherwise stated. If there is any element of your entry that should not be made public, please clarify this on the entry.
- By entering the ELT Excellence Awards, institutions are authorising the organisers to use the data and visuals submitted for the purposes of the awards presentation.

ENTRIES SUBMISSION



All entrants must submit their entry online. Interested schools apply through the www.eltexcelleceawards.gr platform choosing the relevant category.

A Step by step application process

1. Visit eltexcellenceawards.gr and [create your account](#)
2. Login to your [Account page here](#)
3. Fill out your company details. If you are submitting an entry on behalf of a public school, select the corresponding button under personal details.
4. Select the number of categories you will be submitting entries for.
5. Fill out your invoice data (the school or organisation's data if you are submitting on behalf of your school or establishment)
6. Visit the [My Account page](#) and click on the [Submit a new entry link](#) to start filling out your entry.
7. The [View/Edit all your entries link](#) allows you to go back and edit your entries.
8. Deposit the corresponding amount to one of our bank accounts and email a copy of the deposit slip to: athina.k@eltnews.gr



FOR MORE INFORMATION CALL: ATHINA KOUTOUVALI
TEL: 2106712991 | WWW.ELTEXCELLENCEAWARDS.GR
ATHINA.K@ELTNEWS.GR

ENTRY CHECKLIST ▶

TIPS ON ENTERING

Read the criteria and make sure you answer each point. The judges use the criteria points as a basis for their rating.
By following the criteria you stand a better chance of scoring high and make the judges' job easier!

Enter the right categories.
To start, look through the categories carefully and choose the most relevant to you. This will give you a better chance of winning.

Don't exceed the word limit (500 words).

Check everything carefully.
Many projects' descriptions contain errors – mainly spelling or grammatical.

Good presentation pays dividends.
Busy judges are inevitably attracted to easy-to-read, neatly laid out entries. Some of the better submissions include simple, summary bullet points. The best presented entries often incorporate a range of photographs, charts or graphs and other visual material.

Entries will be grouped based on the type of educational institutions.

- Foreign Language Schools
- State Schools
- Private Institutions



Updated Submission Format for the 2026 ELT Excellence Awards

The 2026 ELT Excellence Awards introduce a redesigned submission process to make entries clearer, more focused, and easier to evaluate.

All project-based categories now follow a four-part structure aligned with the official evaluation criteria:

- 1 The Why – Vision & Purpose**
- 2 The How – Implementation**
- 3 The Method – Educational Approach & Tools**
- 4 The Impact – Benefits to Learners**

This new format helps participants present their initiatives with clarity and purpose, ensuring a fair and transparent evaluation based on innovation, quality, and measurable results.

For institutional and individual categories (e.g. School of the Year, Educator of the Year), the form has been adapted to reflect each entrant's broader contribution, culture, and leadership.

The **School of the Year** and **Educator of the Year** categories will remain as in 2025, following the same submission format and evaluation process.

SUBMISSION FEES ▶

Single entry: €210 + 24% VAT
2-5 entries: €180/entry + 24% VAT
5+ entries: €160/entry + 24% VAT

PUBLIC SCHOOLS

Public schools of primary, secondary or tertiary education are entitled to one free entry.



TICKETS TO THE AWARDS CEREMONY

EACH ENTRY IS ENTITLED TO 1 TICKET FOR THE AWARDS CEREMONY.



JUDGING PROCESS ▶



A

ALL APPLICATIONS SHOULD BE SUBMITTED ELECTRONICALLY AT ELTEXCELLENCEAWARDS.GR



B

JUDGING COMMITTEE RATES THE APPLICATIONS



C

APPLICANTS ARE NOTIFIED



D

AWARD CEREMONY DATE ANNOUNCED

The final score will be based on four equally weighted criteria:

- 1 The Why – Vision & Purpose 25%
- 2 The How – Implementation 25%
- 3 The Method – Educational Approach & Tools 25%
- 4 The Impact – Benefits to Learners 25%

This structure ensures that every submission is assessed holistically, valuing both inspiration and execution, innovation and measurable outcomes.



FOR MORE INFORMATION CALL: ATHINA KOUTOUVALI
TEL: 2106712991 | WWW.ELTEXCELLENCEAWARDS.GR
ATHINA.K@ELTNEWS.GR

AWARD CATEGORIES ► Technology and AI



Excellence in Technology Use

The “Excellence in Technology Use” award celebrates the innovative integration of technology in English Language Teaching (ELT). This encompasses a wide range of tools, including computers, artificial intelligence, robotics, online teaching/learning, and blended learning approaches. The award recognizes educators, institutions, and organizations that have shown a strong commitment to advancing language learning by utilizing these technologies to enhance student engagement, improve educational outcomes, and create impactful, effective learning experiences.

AWARD CATEGORIES ► Education/Teaching



Community and Collaboration

This Award recognises educators who excel in fostering community and collaboration, both inside and outside the classroom, empowering students to share knowledge, develop social skills, and achieve collective success in their language learning journey.



Creativity in language learning

The “Creativity in Language Teaching” award celebrates those who think outside the box, offering fresh solutions to challenges and fostering active learner engagement. It recognizes educators who inspire students to explore and interact with language in unique and meaningful ways.




Excellence in School Events

The Award honours schools that use events to create memorable learning experiences, promote inclusivity, and strengthen the school community. It celebrates events that engage students, promote and build a sense of community through activities such as performances, competitions, and cultural celebrations.



FOR MORE INFORMATION CALL: ATHINA KOUTOUVALI
TEL: 2106712991 | WWW.ELTEXCELLENCEAWARDS.GR
ATHINA.K@ELTNEWS.GR

AWARD CATEGORIES ► Education/Teaching



Excellence in Teaching Foreign Languages

This Award showcases projects of outstanding achievement in the teaching of foreign languages. It celebrates educators who go above and beyond to ensure learners thrive and excel in their foreign language studies.



Gamification in Education

This category celebrates approaches to gamification in ELT in order to enhance learning outcomes and inspire students to achieve their full potential.




Innovation in language learning

This category celebrates educators who implement innovative approaches to enhance language learning. By introducing creative strategies and cutting-edge technologies, these educators transform traditional methods, making the learning process more engaging, effective, and accessible for students.



Social Inclusion Initiative

This Award recognises a programme or initiative that has made a contribution towards supporting students with disabilities and/or can demonstrate positive learning experiences with peers of diverse ethnic, linguistic and cultural background. It also celebrates initiatives that create equitable learning environments, ensuring that students from diverse backgrounds, abilities, and experiences have equal opportunities to engage, participate, and succeed in language learning.



Storytelling and Drama in Language Learning

The "Storytelling and Drama in Language Learning" award celebrates the use of storytelling and drama as powerful tools in English Language Teaching. This award recognizes educators who creatively combine stories and role-play to engage students, ignite their imagination, and develop language skills such as listening and speaking.



Support for Special Needs Students

This Award is for those who provide support for special needs students in ELT. It highlights approaches and tailored strategies that ensure learners with diverse needs receive the necessary accommodations, enabling them to thrive and achieve their full potential in language education.



FOR MORE INFORMATION CALL: ATHINA KOUTOUVALI
TEL: 2106712991 | WWW.ELTEXCELLENCEAWARDS.GR
ATHINA.K@ELTNEWS.GR

AWARD CATEGORIES ► Education/Teaching

Teacher Support and Training

This category recognises outstanding efforts in providing support and training for English language teachers. It celebrates initiatives that enhance teachers' professional development, equipping them with the skills, knowledge, and resources necessary to improve their teaching practice and, in turn, benefit their students.

Teaching Adults

This Award highlights effective approaches that address the specific needs and challenges of adult students, encouraging language development while promoting practical skills and real-world application.

Teaching for Raising Awareness for Social Issues

This Award celebrates educators who integrate social awareness into their teaching, equipping learners with the language skills and critical understanding necessary to engage with global and local issues.

Teaching Primary School Students

This Award celebrates educators who excel in teaching English to primary school students. It recognises effective and engaging methods that cater to the developmental needs of young learners, fostering foundational language skills while creating a fun and supportive learning environment.

Teaching Secondary School Learners

This Award honours educators who demonstrate excellence in teaching English to secondary school students. It recognises innovative teaching methods that engage teenagers, helping them develop advanced language skills while addressing their unique academic and social needs during this critical stage of learning.

Teaching through Arts & Crafts

This Award celebrates educators who integrate arts and crafts into English Language Teaching (ELT). It recognises the use of artistic and hands-on activities to enhance language learning, making the process more engaging, interactive, and accessible, particularly for visual and kinaesthetic learners.



FOR MORE INFORMATION CALL: ATHINA KOUTOUVALI
TEL: 2106712991 | WWW.ELTEXCELLENCEAWARDS.GR
ATHINA.K@ELTNEWS.GR

AWARD CATEGORIES ▶ Entrepreneurship



Corporate Educational Platforms

This category recognises excellence in developing and delivering corporate educational platforms for English Language Teaching. It highlights innovative platforms that provide effective, scalable, and flexible learning solutions for stakeholders, helping them improve their language skills in professional contexts.



Educational Platforms

This Award showcases the creation and implementation of educational platforms that offer engaging, accessible, and innovative tools, enabling learners to improve their language skills through flexible, technology-driven solutions.



Excellence in Digital Presence

The ELT Excellence in Digital Presence Award is created to recognize individuals, organizations, or initiatives that have demonstrated excellence in building and maintaining a strong digital presence. It celebrates innovative use of online platforms, social media, and digital tools to engage learners, share resources, and foster a vibrant online learning community.



Excellence in School Facilities

This award celebrates schools that provide state-of-the-art facilities or environments that support effective language learning through well-equipped classrooms, modern technology, and resources that enhance both student engagement and the overall educational experience.



The Edupreneurship Award

The Edupreneurship Award celebrates and honours individuals, organizations who exemplify innovation and entrepreneurship in the field of education. It recognises individuals or organisations that have developed unique educational ventures, products, or services that address learning needs, while demonstrating creativity, business acumen, and a positive impact on the language learning community.



Wellbeing in Learning

This Award recognises educators or institutions that promote well-being within the English Language Teaching (ELT) environment. It celebrates initiatives that support the mental, emotional, and physical well-being of both students and teachers, fostering a positive, balanced, and healthy learning atmosphere that enhances overall educational success.



The Schools'/Teachers' Associations Award

The Teachers' Associations Award recognises collaborative efforts, professional development opportunities, and initiatives that support educators, enhance teaching practices, and promote a strong sense of community within the ELT profession. It celebrates the efforts of Associations that have made significant contributions to the field of ELT.

AWARD CATEGORIES

▶

Single Winner Awards

▶

Educator of the Year Award

This award recognises a teacher’s commitment to CPD, language teaching and dedication to helping students to learn.

Nomination criteria

- Entrants must provide evidence of participation in courses and/or in seminars/webinars that have improved his/her teaching skills and competences.
- Entrants must demonstrate evidence that they have created a supportive, encouraging and inclusive learning environment and have delivered quality language instruction based on well-articulated theory, philosophy and educational research. Student success in language exams is also considered.

Entrants must demonstrate evidence that they have presented in national and international conferences, workshops, seminars, webinars and other educational events, that they have submitted articles in national and international journals and have contributed to the development of new materials.

▶

School of the Year Award

This award celebrates schools that are inclusive and supportive of all students, and/or have trust in their staff, place staff development at the top of their agenda, establish bonds with their local communities donating, and/or helping vulnerable and marginalized groups of people in their respective areas.

AWARD CATEGORIES

▶

Honorary Awards

▶

Lifetime Achievement Award

The "Lifetime Achievement Award" is a prestigious accolade that celebrates an individual's profound and enduring contribution to the field of language education. This recognition honors a distinguished career marked by exceptional teaching, innovation, and influence, leaving an indelible impact on language learners and educators alike.

▶

Posthumous Award

The posthumous award given to an ELT personality is a significant tribute to honour and recognize their exceptional contributions to the field. The award celebrates the lasting impact the individual has made on ELT, it acknowledges the positive influence they had on students, fellow educators, and the broader ELT community. By honouring their memory, the award ensures that their work continues to inspire and shape the field even after their passing.

▶

The Outstanding Achievement Award

This award is awarded to the applicant who has attained the highest overall score among all applicants across all categories.

Why Choose Us ▶

The ELT Excellence Awards are more than a competition. They are a celebration of innovation, creativity, and commitment in English language education.

By participating, you:

Gain Recognition: Showcase your work before an independent judging panel of leading ELT professionals.

Promote Innovation: Highlight original ideas, projects, and practices that make a real impact in teaching and learning.

Join a Community: Become part of a national network of educators and schools shaping the future of ELT in Greece.

Celebrate Excellence: Earn a distinction that reflects your dedication to quality, inclusion, and professional growth.

Inspire Others: Share best practices and contribute to raising educational standards across the sector.

1

THE BEST MARKETING TOOL

OK, word of mouth is the best advertising for your school. The second one is showcasing your work to the entire ELT community in Greece. Pass rates are no longer something to brag about. An award, however, gives you a cost effective way to promote your school in your community.

2

EXCELLENT PUBLICITY

Entering for the ELT Excellence Awards is always excellent news and brings a lot of positive attention and publicity. Even making it on the list of finalists in a category will generate buzz about what you do... and how well you do it. You don't want to ignore such opportunities because every little bit helps. And because your competition isn't sitting idly either.

3

RECEIVE RECOGNITION

An award is always given in recognition of some exceptional achievement. Whether you win or not, the more people that are familiar with your outstanding work the better.

4

CREDIBILITY

Educate and attract. An award makes your school stand out from the competition and has the potential to draw new customers and new employees to your business.

5

CONFIDENCE

Participating in the ELT Excellence Awards is a statement. It shows that you're confident in your work and that you take enough pride in it to enter a competition knowing you can win.



2026 **ELT EXCELLENCE** **AWARDS**

PHONE

+00 30 210 6712991

WEB

www.eltexcellenceawards.gr

EMAIL

ioanna.m@eltnews.gr

ADDRESS

74 Ag Georgiou St
154 51 N. Psychico
GR